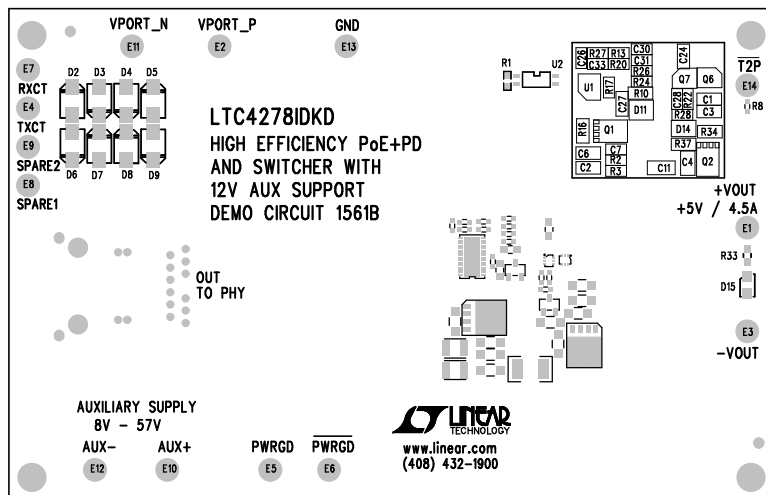


REVISION HISTORY				
ECO	REV	DESCRIPTION	APPR	DATE
-	1	PRODUCTION	RYAN H.	02-02-12

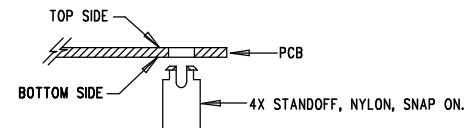


TOP SILKSCREEN

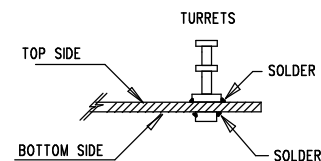
LINEAR TECHNOLOGY  
DC1561B-LTC4278IDKD  
HIGH EFFICIENCY PoE+PD  
AND SWITCHER WITH  
12V AUX SUPPORT  
DATE: 02-02-2012


## NOTES: UNLESS OTHERWISE SPECIFIED

- WORKMANSHIP SHALL BE IN ACCORDANCE WITH IPC-A-610.
- ASSEMBLY PROCESS SHALL INCLUDE: REFLOW SOLDER TOP SIDE SMD. MAXIMUM SOLDER TEMPERATURE IS 240 DEGREES CELSIUS.
- PARTS TO OMIT WILL BE SPECIFIED ON THE BILL OF MATERIALS. LOCATIONS OF OMITTED PARTS SHALL BE FREE OF SOLDER. MASK THE SOLDER STENCIL WHERE SMT PARTS ARE OMITTED.
- DEPANELIZE BOARDS AFTER ASSEMBLY AND ROUTE-OUT THE BREAKOUT TABS ON FOUR SIDES OF THE BOARD EDGE.
- DO NOT APPLY ANY KIND OF ASSEMBLY STAMP OR QA STAMP TO ANY BOARD.
- INSTALL 4 STANDOFFS AT 4 LOCATIONS AS SHOWN BELOW:



- INSTALL TURRETS



APPROVALS		 <div> 1630 MCCARTHY BLVD MILPITAS, CA 95035 PH: (408)432-1900 LTC CONFIDENTIAL- FOR CUSTOMER USE ONLY </div>	
PCB DES.	A. K.		
APP. ENG.	RYAN H.	<b>TITLE: TOP ASSEMBLY DRAWING</b> HIGH EFFICIENCY PoE+PD AND SWITCHER WITH 12V AUX SUPPORT	
		SIZE	IC NO. LTC4278IDKD
		N/A	DEMO CIRCUIT 1561B
			REV. 1
SCALE = NONE		FILENAME: DC1561B-1.PCB	SHT 1 of 2